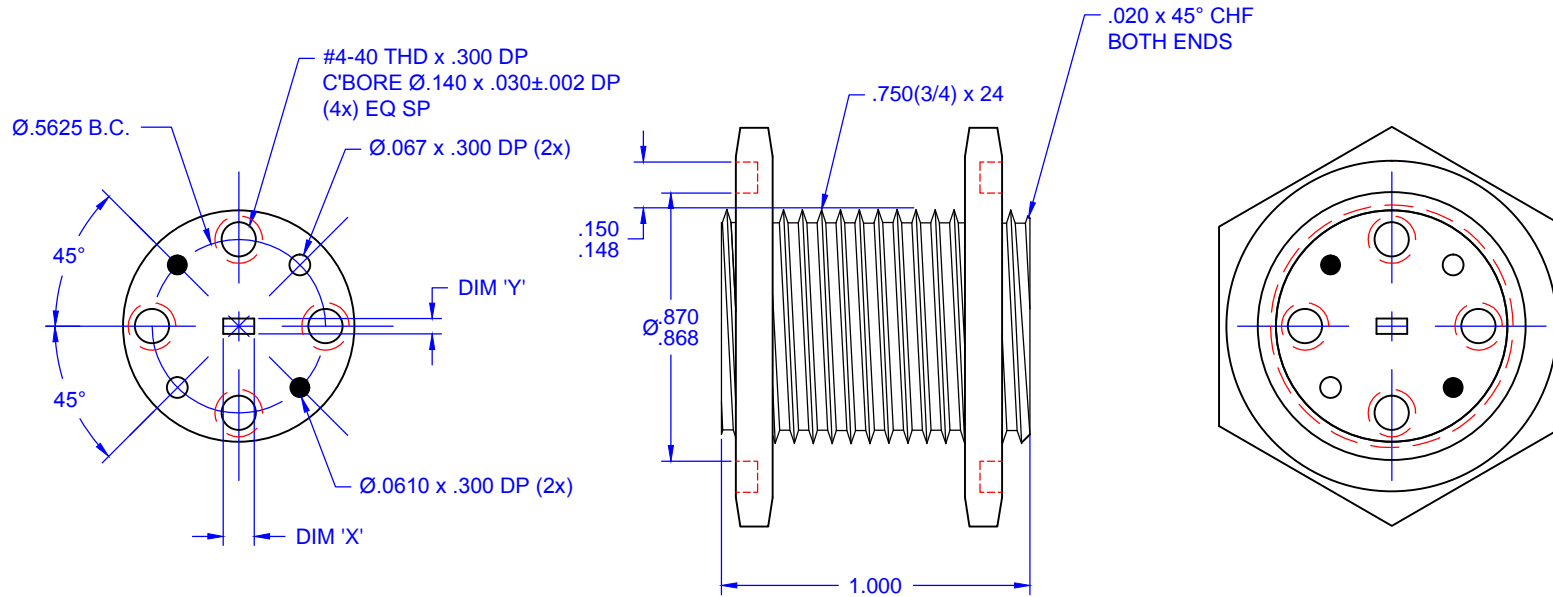


REVISIONS			
REV	DESCRIPTION	DATE	APPROVED
--	--	--	--



REPEAT FLANGE  
PATTERN BOTH ENDS

WAVEGUIDE DESCRIPTOR	DIM 'X' REF	DIM 'Y' REF
WR-15	.1480±.001	.0740±.001
WR-12	.1220±.001	.0610±.001
WR-10	.1000±.001	.0500±.001
WR-8	.0800±.001	.0400±.001
WR-7	.0650±.001	.0325±.001
WR-5	.0510±.001	.0255±.001

EDM NOTE: FACE OFF TO PRINT LENGTH + .005"

--		MATERIAL: 1/2 HARD BRASS		--
QTY	PART NUMBER	DESCRIPTION		ITEM
UNLESS OTHERWISE SPECIFIED ALL SURFACES $\sqrt{32}$		THIRD ANGLE PROJECTION		<b>Mi-Wave</b> Millimeter Products Inc. TITLE <b>712 V-G BULKHEAD ADAPTER</b>
DIMENSIONS ARE IN INCHES TOLERANCES ARE: DECIMALS: .1234 +/- .0005 .123 +/- .005 .12 +/- .01 ANGLES: +/- .5 DEGREES		DRAFTING: MRN		
ALL THREADS TO BE 2A OR 2B		APPROVED: M.S.		
REF DWG #: 12352		DATE: 12/17/2010		
		SHEET NO. 1	OF 1	SIZE A
		DWG NO 20592		